

NOTE:

LOCATION OF ALL UNDERGROUND SERVICES (WATERMAIN, SANITARY SEWER, STORM SEWER) WITHIN THE ROAD ALLOWANCE IS BASED ON "AS CONSTRUCTED" INFORMATION PROVIDED BY THE MUNICIPALITY AND SHOULD BE VERIFIED BY THE CONTRACTOR PRIOR TO ANY CONSTRUCTION.

CONSTRUCTION NOTES:

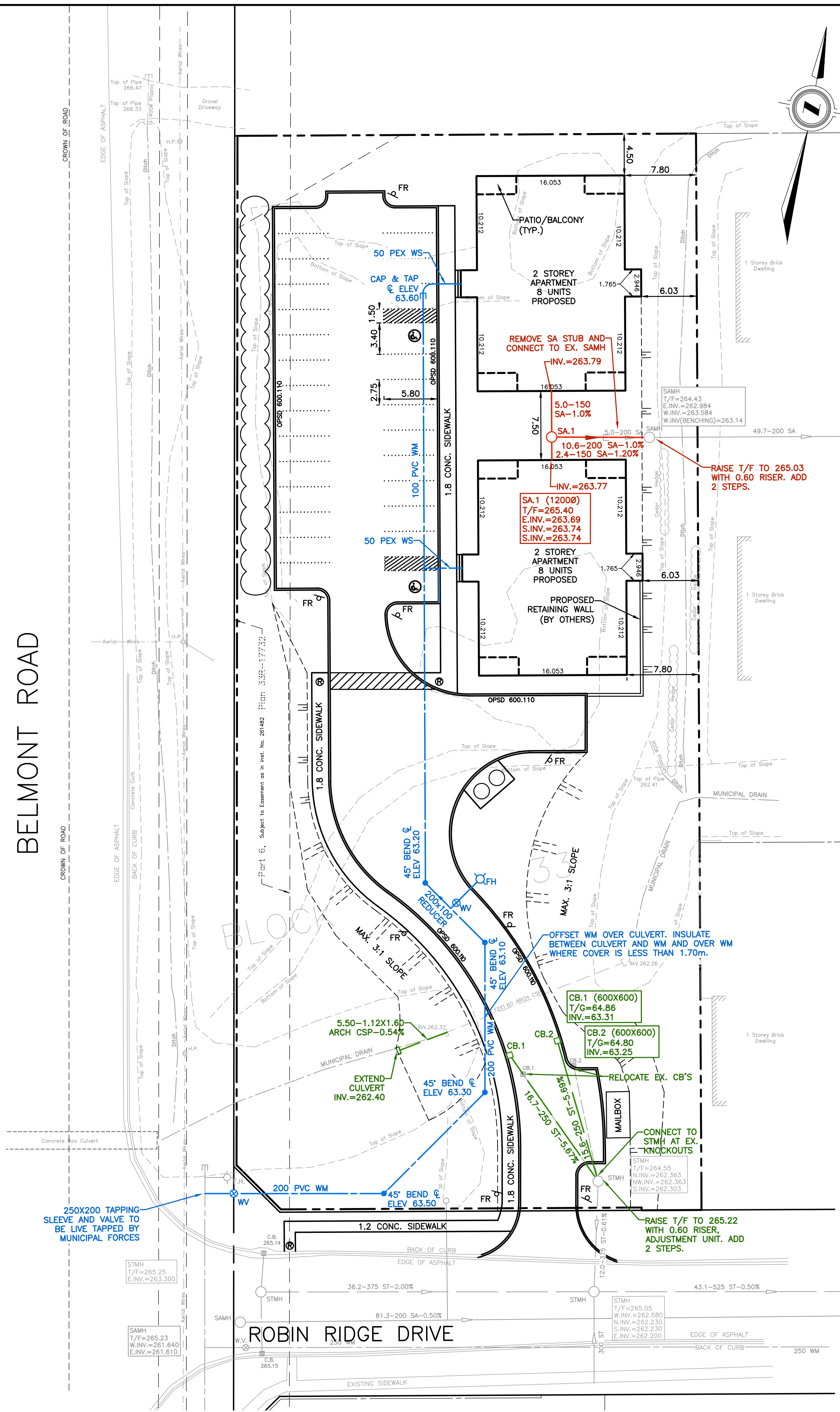
- GENERAL**
- AT LEAST 48 HOURS PRIOR TO COMMENCING CONSTRUCTION ON ANY EXISTING ROAD ALLOWANCE MAINTAINED MUNICIPALITY, THE SUBDIVIDER/DEVELOPER IS TO OBTAIN A WORK APPROVAL PERMIT FROM THE MUNICIPALITY'S ENGINEER'S DEPARTMENT.
 - ALL WORK SHALL MEET THE MINIMUM STANDARDS AND SPECIFICATIONS OF THE MUNICIPALITY'S ENVIRONMENTAL SERVICES DEPARTMENT. THE STANDARD CONTRACT DOCUMENTS FOR MUNICIPAL CONSTRUCTION PROJECTS ARE TO BE APPLIED TO THIS PROJECT. WHERE ANY DISCREPANCY EXISTS BETWEEN THE ADOPTED STANDARD CONTRACT DOCUMENTS AND THE STANDARDS AND SPECIFICATIONS NOTED ON THESE DRAWINGS, THE STANDARD CONTRACT DOCUMENTS WILL GOVERN, UNLESS OTHERWISE APPROVED BY THE MUNICIPALITY'S ENGINEER.
 - THE SUBDIVIDER/DEVELOPER IS TO MEET ALL THE REQUIREMENTS OF THE OWNERS OF THE UTILITIES ON THIS PLAN, AND MUST MAKE SATISFACTORY ARRANGEMENTS WITH THE UTILITY COMPANIES FOR CROSSING THEIR INSTALLATIONS AND FOR PROVIDING ADEQUATE PROTECTION DURING CONSTRUCTION.
 - EXISTING SURFACES WITHIN THE ROAD ALLOWANCE WHICH ARE DISTURBED DURING CONSTRUCTION SHALL BE RESTORED TO A CONDITION AT LEAST AS GOOD AS ORIGINAL OR AS OTHERWISE NOTED TO THE SPECIFICATIONS OF THE CITY ENGINEER. ALL ASPHALT CUTS ARE TO BE MILLED (40mm DEEP X 450mm WIDE) IF BASE ASPHALT HAS BEEN PLACED.
 - THE SUBDIVIDER/DEVELOPER IS TO NOTIFY THE TECHNICAL SERVICES DIVISION IN WRITING AT LEAST 48 HOURS PRIOR TO COMMENCING CONSTRUCTION.
 - THE SUBDIVIDER/DEVELOPER SHALL HAVE ITS PROFESSIONAL ENGINEER PROVIDE FULL-TIME INSPECTION DURING CONSTRUCTION AND A CERTIFICATE OF COMPLETION OF WORKS UPON COMPLETION OF ALL WORKS TO BE CONSTRUCTED ON AN EXISTING CITY STREET OR EASEMENT.
 - THE SUBDIVIDER/DEVELOPER SHALL HAVE ITS PROFESSIONAL ENGINEER PROVIDE ADEQUATE INSPECTION DURING CONSTRUCTION AND A CERTIFICATE OF COMPLETION OF WORKS UPON COMPLETION OF ALL WORKS WHICH ARE TO BE ASSUMED BY THE MUNICIPALITY.
 - BOULEVARDS TO BE RESTORED WITH NURSERY SOD ON 100mm TOPSOIL.
- SEWERS**
- P.D.C.s SHALL BE PVC SDR 28.
 - SEWER BEDDING SHALL BE GRANULAR 'A' COMPACTED TO 98% STANDARD PROCTOR MAXIMUM DRY DENSITY. WHERE HIGH GROUND WATER LEVELS ARE ENCOUNTERED, HL-4 CRUSHED STONE BEDDING SHALL BE USED AND SHALL HAVE A GEOTEXTILE WRAP OF TERRAFIX 200R OR EQUIVALENT AS RECOMMENDED BY THE GEOTECHNICAL ENGINEER.
 - APPROVED BACKFILL MATERIAL TO BE COMPACTED TO 98% STANDARD PROCTOR MAXIMUM DRY DENSITY.
- WATERMAIN**
- ALL WATERMAIN CONSTRUCTION AND APPURTENANCES AS PER MUNICIPALITY'S ENGINEER'S DEPARTMENT WATERWORK GENERAL CONDITIONS, SPECIFICATIONS, AND DRAWINGS FOR THE WATER, SEWAGE & URBAN DRAINAGE DIVISION.
 - MINIMUM COVER OVER WATERMAIN AND SERVICES TO BE 1.80m.
 - ALL SERVICES SHALL BE 50mm DIAMETER PEX MATERIAL.
 - FIRE HYDRANT TO BE 3-WAY WITH STORZ CONNECTION AND IN ACCORDANCE WITH THE MUNICIPALITY'S STANDARD.

ONTARIO PROVINCIAL STANDARDS

THE FOLLOWING ONTARIO PROVINCIAL STANDARD DRAWINGS SHALL BE USED ON THIS PROJECT:

OPSD 400.020	CATCHBASIN, CAST IRON, FRAME & FLAT SQUARE GRATE
OPSD 401.010	MAINTENANCE HOLE, CAST IRON COVER & SQUARE FRAME
OPSD 405.010	MAINTENANCE HOLE STEPS - CIRCULAR ALUMINIUM
OPSD 600.040	CONCRETE BARRIER CURB WITH STANDARD GUTTER FOR FLEXIBLE PAVEMENT
OPSD 600.100	CONCRETE MOUNTABLE CURB WITH NARROW GUTTER
OPSD 600.110	CONCRETE BARRIER CURB
OPSD 701.010	PRECAST MAINTENANCE HOLE - 1200mm DIA.
OPSD 701.021	MAINTENANCE HOLE BENCHING DETAILS
OPSD 701.030	PRECAST CONCRETE MAINTENANCE HOLE COMPONENTS - 1200mm DIA.
OPSD 704.010	MAINTENANCE HOLE AND CATCH BASIN PRECAST CONCRETE ADJUSTMENT UNITS
OPSD 705.010	PRECAST CONCRETE CATCHBASIN 600 X 600, DEPTH - 4.0m MAX.

BELMONT ROAD



LEGEND

- EXISTING SANITARY SEWER AND MANHOLE
- PROPOSED SANITARY SEWER AND MANHOLE
- EXISTING STORM SEWER AND MANHOLE
- PROPOSED STORM SEWER AND MANHOLE
- PROPOSED CATCHBASIN
- EXISTING WATERMAIN
- PROPOSED WATERMAIN WITH CAP & BLOWOFF
- EXISTING FIRE HYDRANT AND VALVE
- PROPOSED FIRE HYDRANT AND VALVE (WITH STORZ CONNECTION)
- 150 EXISTING WATER SERVICE & VALVE
- 25mm WATER SERVICE, METER & CURBSTOP
- PROPOSED RAMP
- FIRE ROUTE SIGN

SITE BENCHMARK:

- TOP SPINDLE OF FIRE HYDRANT
Elevation=266.257m
- TOP OF FOUNDATION UNIT 17
Elevation=263.590m
- TOP OF FOUNDATION UNIT 18
Elevation=266.017m

ENGINEER'S CERTIFICATE

I HEREBY CERTIFY THAT THE PROPOSED GRADING AND APPURTENANT DRAINAGE WORKS COMPLY WITH SOUND ENGINEERING DESIGN AND DRAINAGE PATTERNS ON AND ACROSS THESE LANDS AND THE ADJOINING LANDS OR APPLICABLE BY-LAWS.

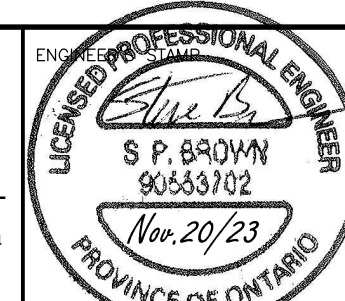
METRIC

DISTANCES SHOWN ON THIS PLAN ARE IN METRES AND CAN BE CONVERTED TO FEET BY DIVIDING BY 0.3048

AS CONSTRUCTED SERVICES	COMPLETION	No.	REVISIONS	DATE	BY
DESIGN	DTM/SPB				
DRAWN	ADM				
CHECKED	LRS/SPB				
APPROVED	SPB				
DATE	NOVEMBER 2023				

AGM
PLAN • SURVEY • ENGINEER

ARCHIBALD, GRAY & MCKAY
ENGINEERING LTD.
3514 WHITE OAK ROAD, LONDON, ON, N6E 2Z9
PHONE 519-685-5300 FAX 519-685-5303
EMAIL info@agm.on.ca WEB www.agm.on.ca



DOLMAGE DESIGN BUILD INC.

SCALE - 1 : 300
3 0 6m

TITLE	ROBIN RIDGE DRIVE BLOCK 33, PLAN 33M-658	PROJECT No.	1517-1
	SERVICING PLAN	SHEET No.	03
		PLAN FILE No.	