

LEGEND:

- 255.87 EXISTING ELEVATION
- 201.26 PROPOSED ELEVATION
- DENOTES EDGE OF PAVEMENT ELEVATION
- 256.00 EXISTING CONTOURS
- PROPOSED STORM MANHOLE
- EX. STORM MANHOLE
- PROPOSED SANITARY MANHOLE
- EX. SANITARY MANHOLE
- PROPOSED CATCHBASIN
- EX. CATCHBASIN
- PROPOSED CATCHBASIN MANHOLE
- MCB PROPOSED MINI CATCHBASIN
- FIRE HYDRANT
- COMMUNAL MAILBOX
- PROPOSED LIGHT STANDARD
- PROPOSED REGISTERED PLAN LOT NUMBERS/BLOCK NUMBERS
- DRAINAGE DIRECTION ARROW
- REAR YARD SWALE
- ▨ C/T CURB TRANSITION
- LIGHT DUTY SILT FENCE
- STRAWBALE FILTER
- DEVELOPMENT BOUNDARY
- EMERGENCY MAJOR OVERLAND FLOW
- 1.8m HIGH PRIVACY FENCE
- PONDING LIMIT

SEDIMENT CONTROL MEASURES

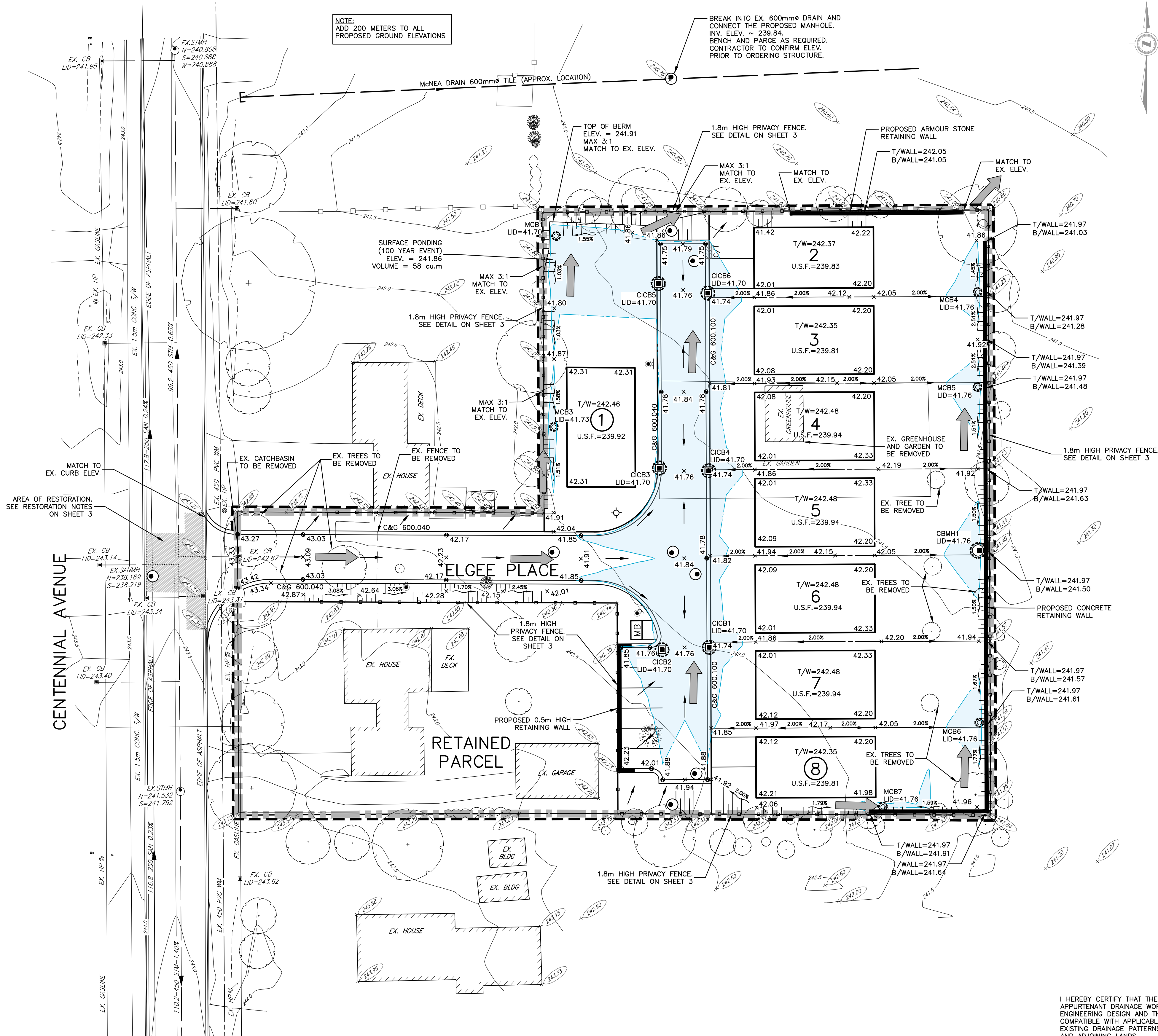
1. PROTECT ALL EXPOSED SURFACES AND CONTROL ALL RUNOFF DURING CONSTRUCTION
2. ALL EROSION CONTROL MEASURES TO BE IN PLACE BEFORE STARTING CONSTRUCTION AND REMAIN IN PLACE UNTIL RESTORATION IS COMPLETE
3. MAINTAIN EROSION CONTROL MEASURES DURING CONSTRUCTION
4. ALL COLLECTED SEDIMENT TO BE DISPOSED OF AT AN APPROVED LOCATION
5. MINIMIZE AREA DISTURBED DURING CONSTRUCTION
6. ALL DEWATERING TO BE DISPOSED OF IN AN APPROVED SEDIMENTATION BASIN
7. PROTECT ALL CATCHBASINS, MANHOLES AND PIPE ENDS FROM SEDIMENT INTRUSION WITH GEOTEXTILE (TERRAFIX 270R OR APPROVED EQUIVALENT)
8. KEEP ALL SUMPS CLEAN DURING CONSTRUCTION
9. PREVENT WIND-BLOWN DUST
10. STRAW BALES TO BE USED IN LOCALIZED AREAS AS SHOWN AND AND AS DIRECTED BY THE ENGINEER DURING CONSTRUCTION FOR WORKS WHICH ARE IN OR ADJACENT TO FLOODLINES, FILL LINES AND HAZARDOUS SLOPES.
11. STRAWBALES TO BE TERMINATED BY ROUNDING BALES TO CONTAIN AND FILTER RUNOFF.
12. OBTAIN APPROVAL FROM CATFISH CREEK CA PRIOR TO CONSTRUCTION FOR WORKS WHICH ARE IN OR ADJACENT TO FLOODLINES, FILL LINES AND HAZARDOUS SLOPES.
13. ALL SILT FENCING AND DETAILS ARE AT THE MINIMUM TO BE CONSTRUCTED IN ACCORDANCE WITH THE MINISTRY OF NATURAL RESOURCES GUIDELINES ON EROSION AND SEDIMENT CONTROL FOR URBAN CONSTRUCTION SITES.
14. ALL OF THE ABOVE NOTES AND ANY SEDIMENT & EROSION CONTROL MEASURES ARE AT THE MINIMUM TO BE IN ACCORDANCE WITH THE MINISTRY OF NATURAL RESOURCES GUIDELINES ON EROSION AND SEDIMENT CONTROL FOR URBAN CONSTRUCTION SITES.

GEODETTIC BENCHMARK:

STATION NO.: 0011926U1641
 DESCRIPTION: ST. THOMAS HOLY ANGELS ROMAN CATHOLIC CHURCH ON TALBOT STREET, TABLET IN STONEMWORK OF EAST SIDE WALL, 13.11 M FROM FRONT CORNER, IN FIRST COURSE ABOVE BASEMENT WINDOW-SILLS.
 GEODETTIC ELEVATION - 231.710m

LOT GRADING NOTES

1. EXISTING DRAINAGE OF ABUTTING LANDS IS NOT TO BE DISTURBED.
2. LOCALIZED SURFACE DRAINAGE FROM ABUTTING PROPERTIES TO BE DEVELOPED IN THE FUTURE MAY BE DISCHARGED ONTO THE PROPOSED LOTS IN THIS SUBDIVISION.
3. BASEMENT OPENINGS TO BE MINIMUM 300mm ABOVE FINISHED C/L OF ROAD UNLESS OTHERWISE APPROVED BY THE CITY ENGINEER.
4. GROUND ELEVATIONS AT HOUSES ABUTTING OVERLAND FLOW ROUTES ARE TO BE 225mm ABOVE OVERLAND FLOW ROUTE ELEVATIONS.
5. SUMP PUMP DISCHARGES SHALL BE DIRECTED INTO THE STORM SEWER VIA STORM PDC'S.
6. RETAINING WALLS 1.0m OR GREATER ARE TO BE DESIGNED BY AND CONSTRUCTED TO THE SPECIFICATIONS OF A REGISTERED PROFESSIONAL ENGINEER IN ACCORDANCE WITH THE ONTARIO BUILDING CODE.
7. FOR SEDIMENT AND EROSION CONTROL DETAILS SEE THIS SHEET.
8. ALL GRASSED AREAS TO BE RESTORED WITH A MINIMUM 300mm TOPSOIL.



I HEREBY CERTIFY THAT THE PROPOSED GRADING AND APPURTENANT DRAINAGE WORKS COMPLY WITH SOUND ENGINEERING DESIGN AND THAT THE PROPOSED GRADING IS COMPATIBLE WITH APPLICABLE CITY BY-LAWS AND THE EXISTING DRAINAGE PATTERNS ON AND CROSS THESE LANDS AND ADJOINING LANDS.

Z:\LD-00303 - 216 CENTENNIAL AVE. CENTRAL ELGIN DETAIL DESIGN\DWG\0303_01-02_SERVICING & GRADING PLAN.DWG

EXISTING SERVICES	DRAWING #, SOURCE	DATE	CONSTRUCTED SERVICES	COMPLETION	DETAILS	No.	REVISIONS	DATE	CONSULTANT	CONSULTANT OR DIVISION	ENGINEER'S STAMP	SCALE	TITLE	PROJECT No.
					DESIGN AS/MG					 	HORZ - 1 : 300 3 0 6m	216 CENTENNIAL AVENUE LEN GRAAT SITE GRADING PLAN	LD-00303 SHEET No. 2 of 3 PLAN FILE No.	
				DRAWN BY MG										
				CHECKED KU										
				APPROVED AG										
				DATE 2023-08-31										
06303-01-02_Servicing & Grading plan.dwg														