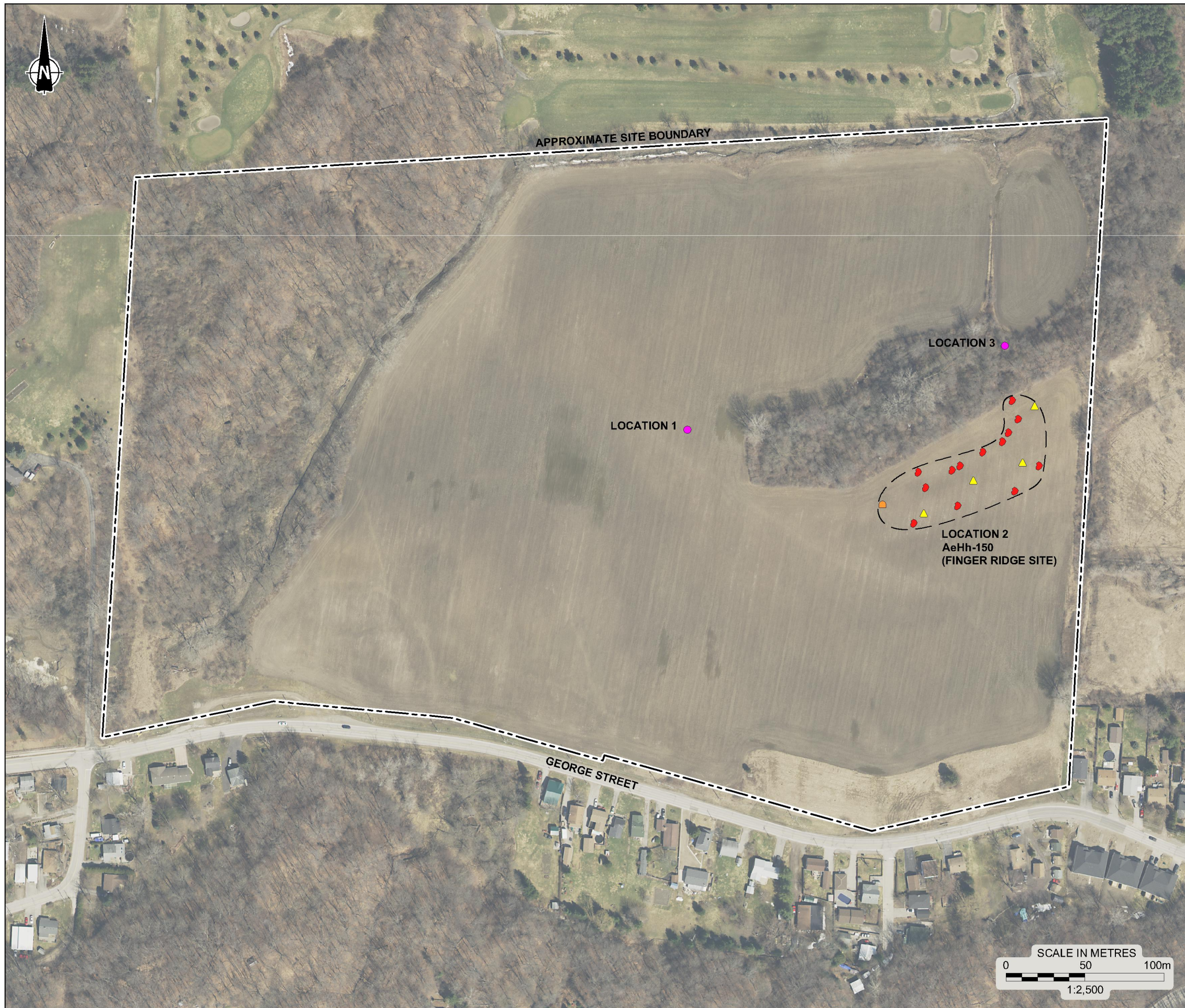


Drawing file: 1659428-R010T1.dwg Nov 07, 2016 - 10:16am



**LEGEND**


- ARCHAEOLOGICAL SITE (SINGLE ARTIFACT)
- BIFACE
- CHIPPING DETRITUS (COLLECTED)
- ▲ PROJECTILE POINT

**REFERENCE**

DRAWING BASED ON 2015 AERIAL IMAGE PRODUCED BY GOLDER ASSOCIATES LTD. UNDER LICENCE WITH THE ONTARIO MINISTRY OF NATURAL RESOURCES © QUEEN'S PRINTER FOR ONTARIO, 2016; WASTELL HOMES, 41703-100-T1 - UNCONFIRMED BOUNDARY.DWG, AUGUST 31, 2016; AND CANMAP STREETFILES V2008.4.

**NOTES**

THIS DRAWING IS SCHEMATIC ONLY AND IS TO BE READ IN CONJUNCTION WITH ACCOMPANYING TEXT. ALL LOCATIONS ARE APPROXIMATE.

PROJECT		STAGE 1-2 ARCHAEOLOGICAL ASSESSMENT GEORGE STREET LAND PARCEL ELGIN COUNTY, ONTARIO	
TITLE		LOCATION OF SITES	
PROJECT No.	1659428	FILE No.	1659428-R010T1
CADD	LMK/ZJB Nov. 7/16	SCALE	AS SHOWN
CHECK			REV.
		TILE 1	