

Schedule "A"

To The Official Plan of
The Municipality of
Central Elgin

LAND USE PLAN



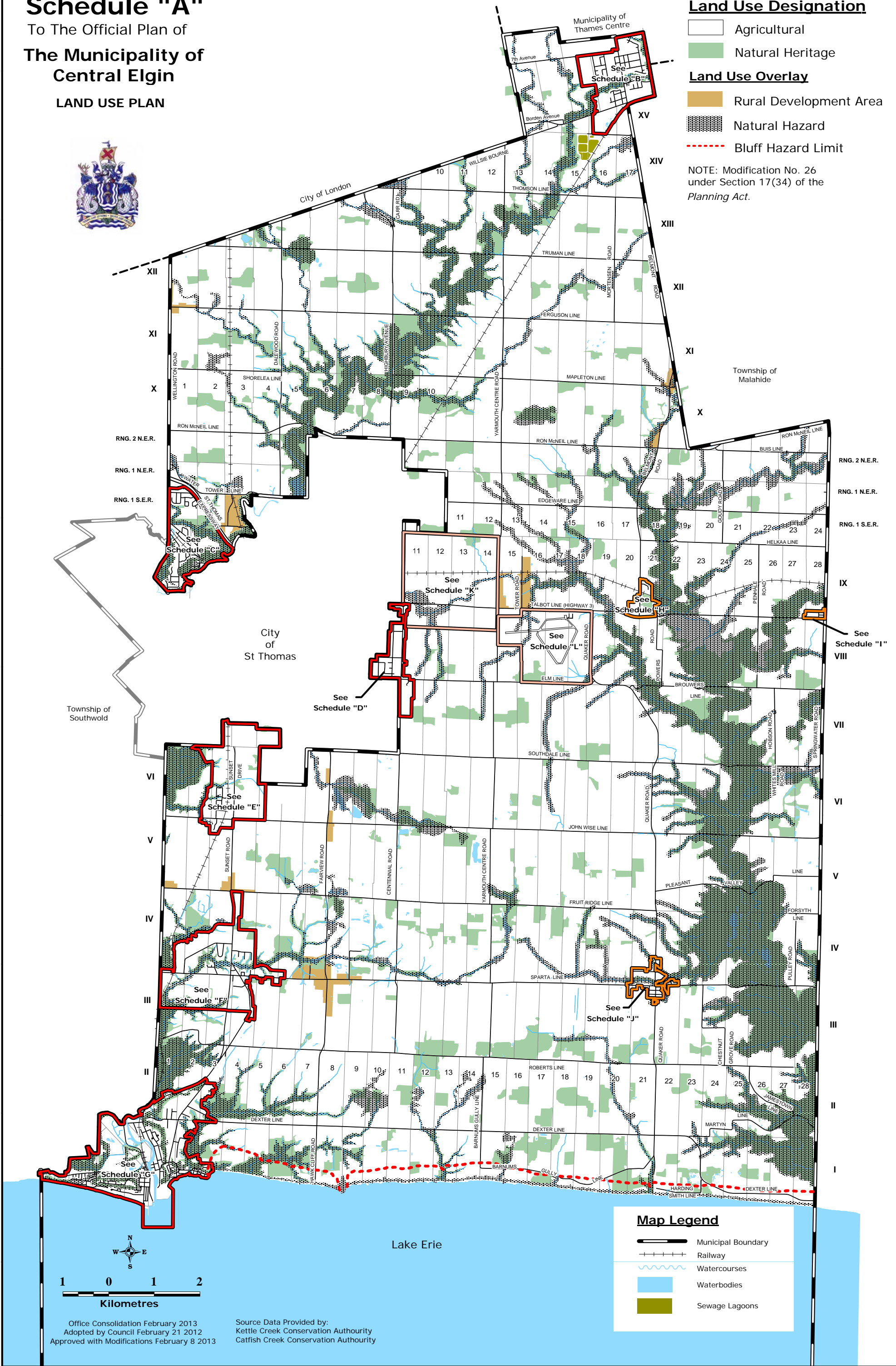
Land Use Designation

- Agricultural
- Natural Heritage

Land Use Overlay

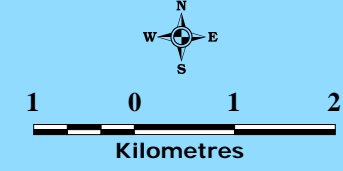
- Rural Development Area
- Natural Hazard
- Bluff Hazard Limit

NOTE: Modification No. 26
under Section 17(34) of the
Planning Act.



Map Legend

- Municipal Boundary
- Railway
- Watercourses
- Waterbodies
- Sewage Lagoons



Office Consolidation February 2013
Adopted by Council February 21 2012
Approved with Modifications February 8 2013

Source Data Provided by:
Kettle Creek Conservation Authority
Catfish Creek Conservation Authority