

Municipality of
Thames Centre

Schedule "B1"

To The Official Plan of
The Municipality of
Central Elgin
**Community
of Belmont**


ROADS CLASSIFICATION and WIDENING

Roads Classification


Municipal

-  Collector
-  Local
-  Road Widening







County

-  County Road

Provincial

-  Provincial Highway

Map Legend

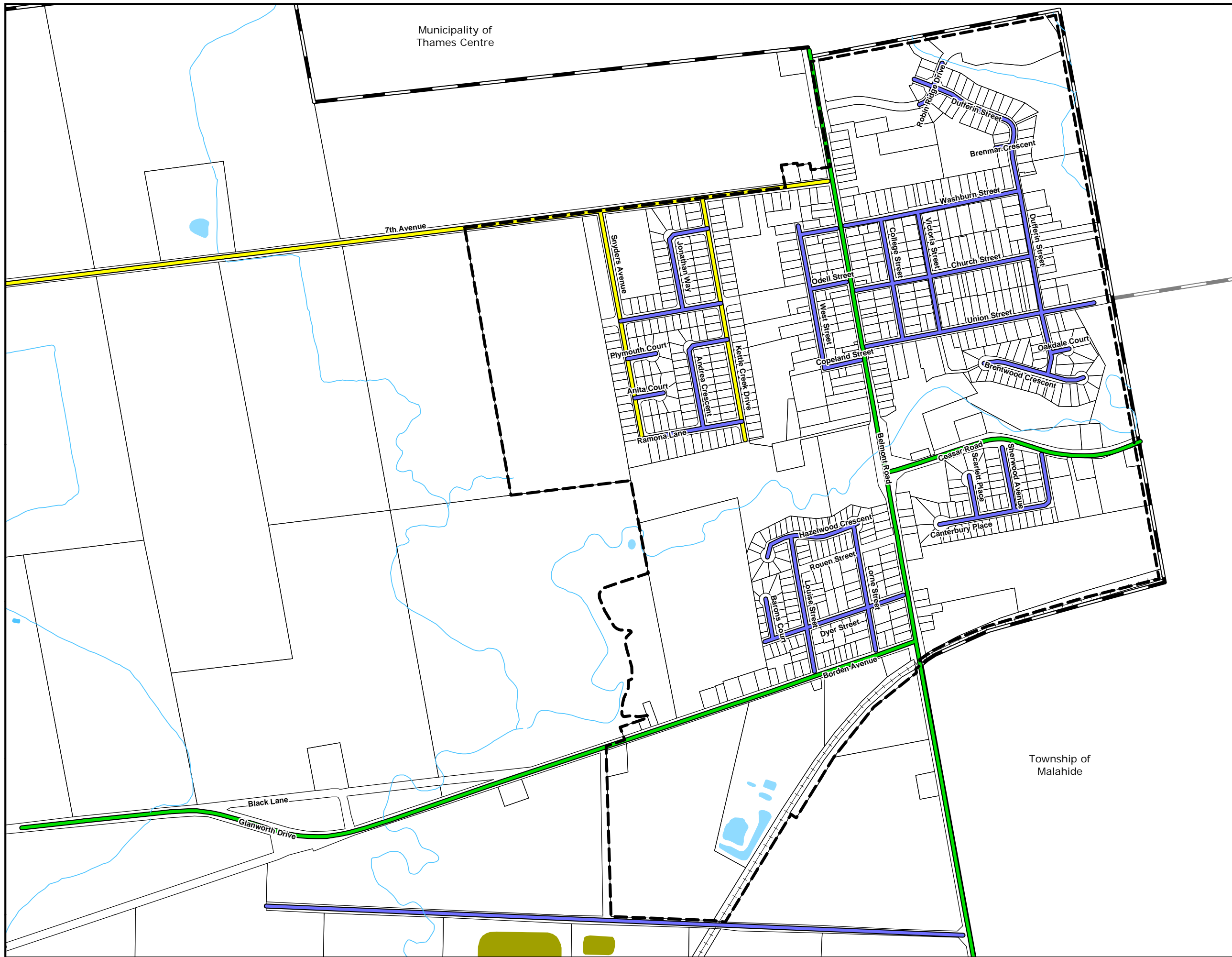
-  Urban Settlement Area
-  Municipal Boundary
-  Railway
-  Watercourses
-  Waterbodies
-  Sewage Lagoons



175 0 175 350

Metres

Office Consolidation February 2013
Adopted by Council February 21 2012
Approved with Modifications February 8 2013



Township of
Malahide