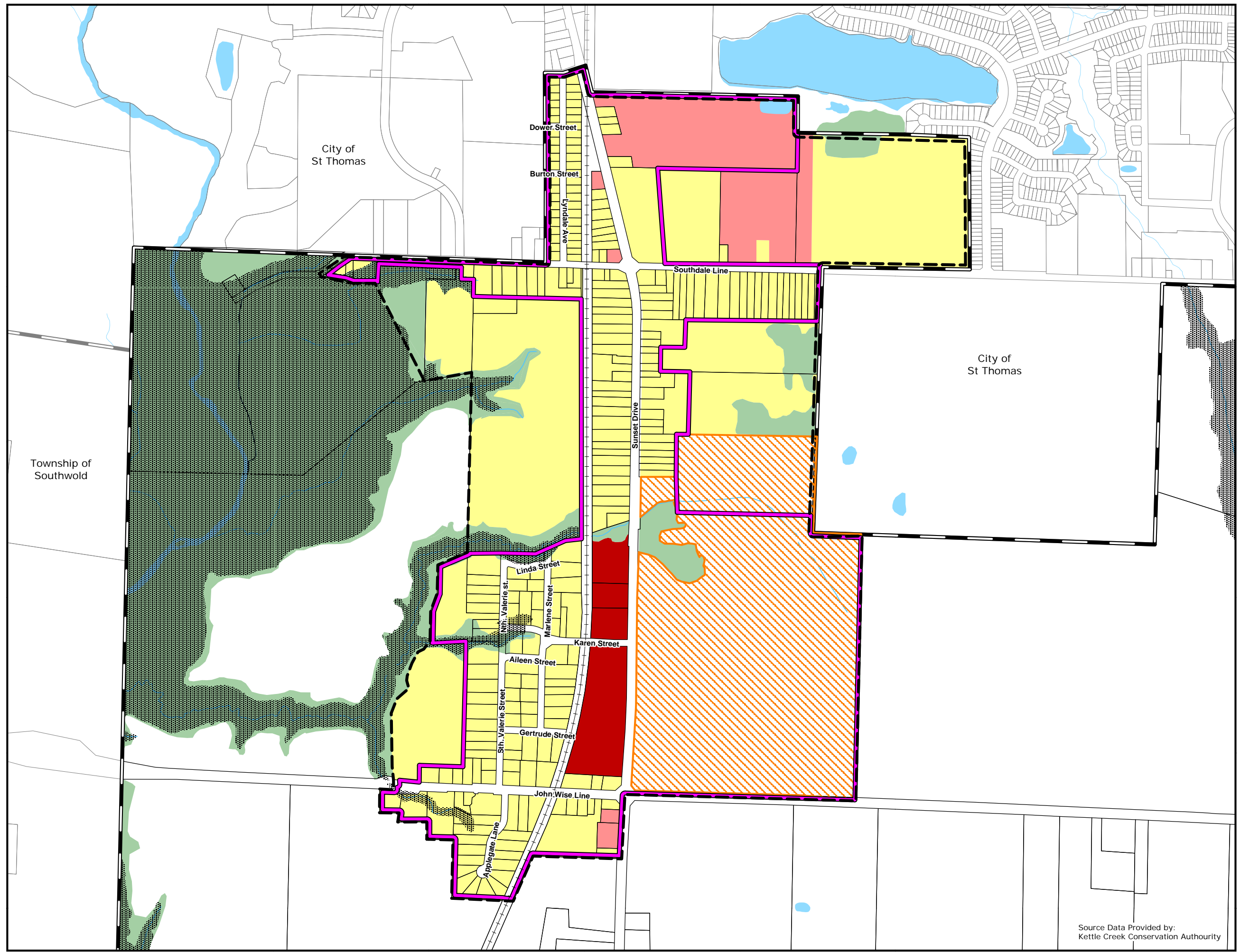


Schedule "E"

To The Official Plan of
The Municipality of
Central Elgin
**Community of
Norman Lyndale**
LAND USE PLAN









Land Use Designation

-  Agricultural
-  Residential
-  Local Commercial
-  Office Professional
-  Natural Heritage
-  Natural Hazard
-  Special Policy Area 1
St Thomas Psychiatric Hospital

NOTE: Modification No. 28
under Section 17(34) of the
Planning Act

Map Legend

-  Urban Settlement Area
-  Built Area Limits
-  Municipal Boundary
-  Railway
-  Watercourses
-  Waterbodies



Metres

Source Data Provided by:
Kettle Creek Conservation Authority

Office Consolidation February 2013
Adopted by Council February 21 2012
Approved with Modifications February 8 2013