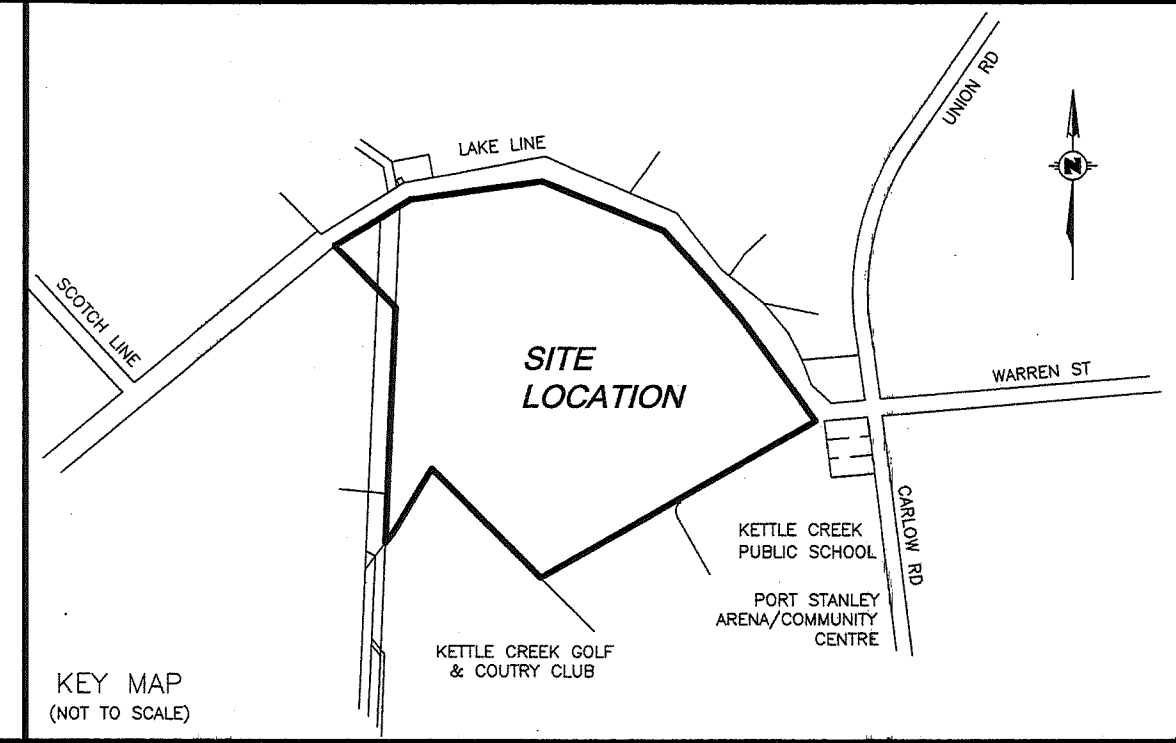


SUBJECT TO THE CONDITIONS, IF ANY, SET FORTH IN OUR LETTER DATED _____ DAY OF _____, 20____, THIS DRAFT PLAN IS APPROVED UNDER SECTION 51 OF THE PLANNING ACT THIS _____ DAY OF _____, 20____.



DRAFT PLAN OF SUBDIVISION
 OF PART OF
CLERGY RESERVE LOT "D"
 NORTH OF THE LAKE ROAD
 AND PART OF
JAMES BEGG LOTS 14 & 15
 REGISTERED PLAN No. 20 (MIDD)
 AND PART OF
ROAD ALLOWANCE BETWEEN LOTS
14 & 15
 NORTH OF THE LAKE ROAD
 AND ALL OF
LOT "T", REGISTERED PLAN No. 39
 IN THE
TOWNSHIP OF SOUTHWOLD
 (GEOGRAPHIC TOWNSHIP OF SOUTHWOLD)
COUNTY OF ELGIN
 SCALE 1:1000 (Metric)
 TERRY P. DIETZ
 ONTARIO LAND SURVEYOR

ADDITIONAL INFORMATION REQUIRED UNDER SECTION 51(17) OF THE PLANNING ACT:

- a) AS SHOWN
- b) AS SHOWN
- c) AS SHOWN
- d) AS SHOWN
- e) AS SHOWN
- f) AS SHOWN
- g) AS SHOWN
- h) MUNICIPAL WATER AVAILABLE
- i) SILTY CLAY LOAM
- j) AS SHOWN
- k) STORM & SANITARY SEWERS, HYDRO, GAS
- l) AS SHOWN

LAND USE SCHEDULE

LOTS 1 TO 72, 82 TO 88 - SINGLE FAMILY RESIDENTIAL	4.41 ha. (44,144.28 sq.m.)
LOTS 73 TO 81 SEMI DETACHED DWELLINGS	2.02 ha. (20,294.36 sq.m.)
BLOCKS 89, 90 & 94 - OPEN SPACE	4.28 ha. (42,712.90 sq.m.)
BLOCKS 91, 92 & 92 - WALKWAYS	0.08 ha. (844.75 sq.m.)
ROADS	2.03 ha. (20,271.65 sq.m.)
TOTAL SITE AREA:	12.83 ha. (128,267.94 sq.m.)

OWNER'S CERTIFICATE
 I HEREBY AUTHORIZE CALLON DIETZ INC. TO SUBMIT THIS PLAN OF PROPOSED SUBDIVISION TO THE CORPORATION OF THE COUNTY OF ELGIN FOR APPROVAL.

Nov. 8, 2021
 LONDON, ONTARIO
 JAMES GLOVER
 I HAVE THE AUTHORITY TO BIND THE CORPORATION

SURVEYOR'S CERTIFICATE
 I HEREBY CERTIFY THAT THE BOUNDARIES OF THE LANDS TO BE SUBDIVIDED AND THEIR RELATIONSHIP TO ADJACENT LANDS ARE ACCURATELY AND CORRECTLY SHOWN ON THIS PLAN.

Nov 8/21
 LONDON, ONTARIO
 TERRY P. DIETZ
 ONTARIO LAND SURVEYOR

METRIC DISTANCES AND COORDINATES SHOWN ON THIS PLAN ARE IN METRES AND CAN BE CONVERTED TO FEET BY DIVIDING BY 0.3048

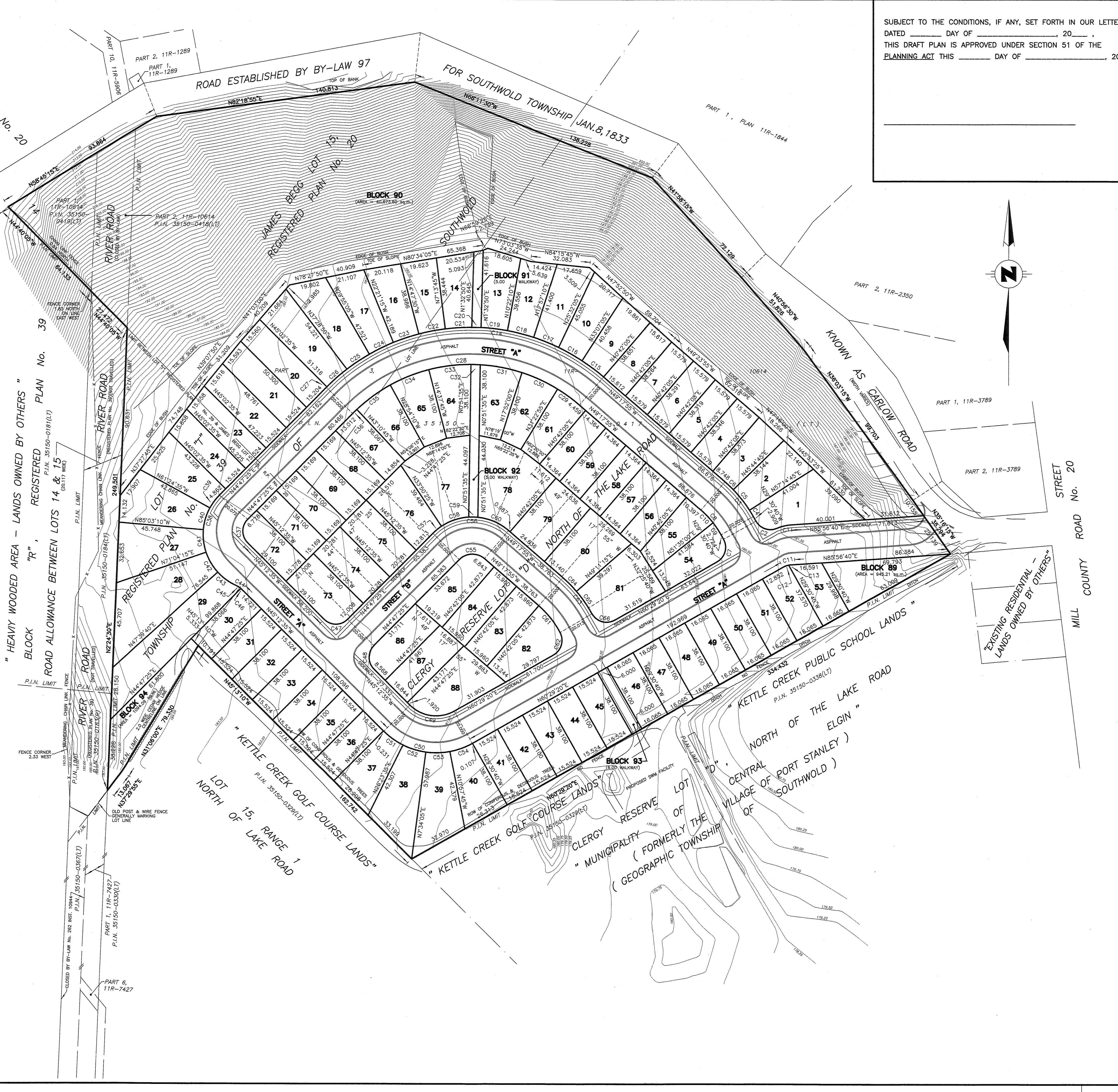
Callon Dietz INCORPORATED
 ONTARIO LAND SURVEYORS
 CARLETON PLACE LONDON NORTH BAY
 info@callondietz.com callondietz.com

SURVEY BY: DRAWN BY: H.D. FILE No: 19-22517B PLAN No: X-2801

ISO 9001

CURVE TABLE

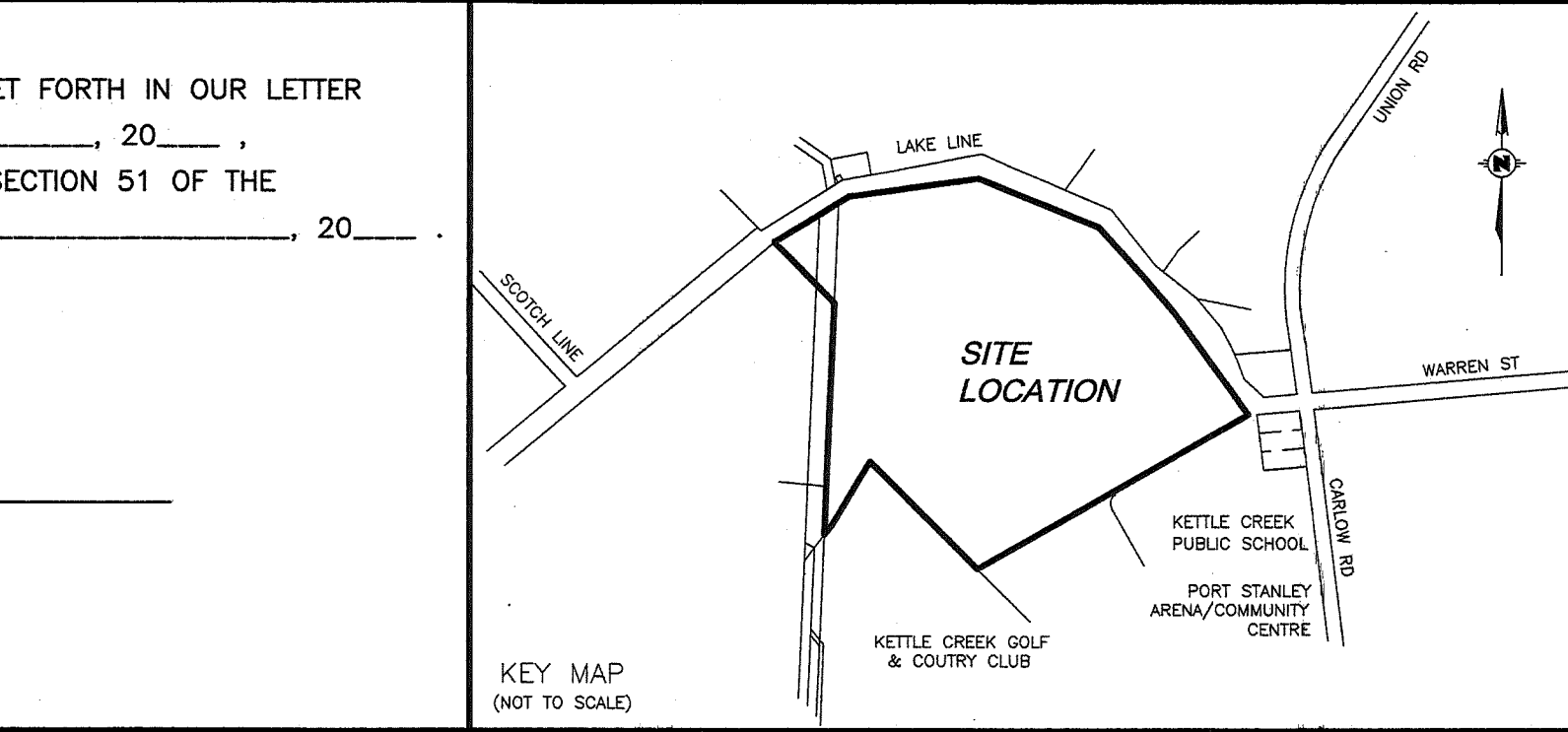
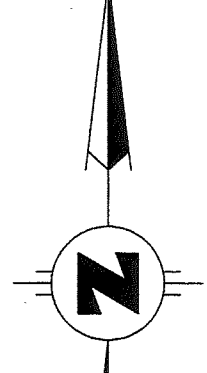
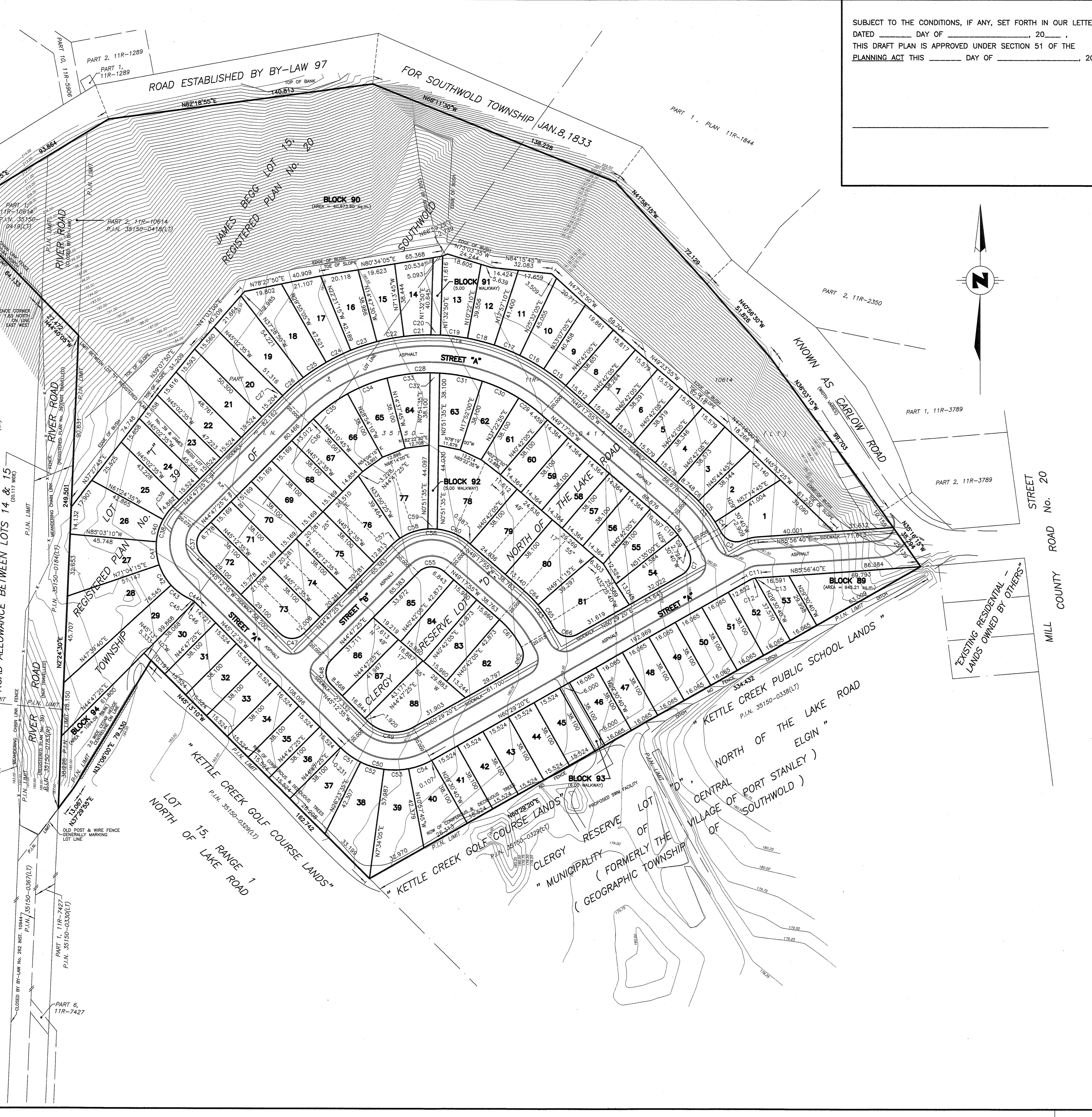
CURVE	RADIUS	ARC	CHORD	BEARING
C1	23.750	8.025	7.987	N76°15'49"E
C2	9.000	13.180	12.033	N71°27'52"W
C3	70.000	24.174	24.054	N39°24'19"W
C4	70.000	3.963	3.963	N31°08'01"W
C5	70.000	14.050	14.026	N38°30'20"W
C6	70.000	6.161	6.159	N46°46'38"W
C7	9.000	14.137	12.728	N15°29'18"E
C8	50.000	17.268	17.182	N39°24'19"W
C9	50.000	7.773	7.785	N33°57'54"W
C10	50.000	9.495	9.481	N43°51'31"W
C11	10.000	4.442	4.406	N73°12'58"E
C12	10.000	3.271	3.257	N69°51'37"E
C13	10.000	1.171	1.171	N82°35'18"E
C14	110.000	164.934	149.915	N87°44'45"E
C15	110.000	14.558	14.548	N53°05'25"W
C16	110.000	14.558	14.548	N60°40'23"W
C17	110.000	14.558	14.548	N68°15'22"W
C18	110.000	14.558	14.548	N75°50'21"W
C19	110.000	14.428	14.418	N83°23'18"W
C20	110.000	5.000	5.000	N88°26'54"W
C21	110.000	14.358	14.348	N86°30'36"E
C22	110.000	14.519	14.509	N78°59'22"E
C23	110.000	14.519	14.509	N71°25'36"E
C24	110.000	14.519	14.509	N63°51'50"E
C25	110.000	14.520	14.509	N56°18'04"E
C26	110.000	14.519	14.509	N48°44'18"E
C27	110.000	0.320	0.320	N44°52'25"E
C28	90.000	134.948	122.657	N87°44'45"E
C29	90.000	14.639	14.623	N53°57'31"W
C30	90.000	21.229	21.180	N65°22'33"W
C31	90.000	23.005	22.942	N79°27'22"W
C32	90.000	5.001	5.000	N88°22'14"W
C33	90.000	23.039	22.976	N82°42'15"E
C34	90.000	22.421	22.363	N68°14'02"E
C35	90.000	22.423	22.365	N53°57'33"E
C36	90.000	3.191	3.191	N45°48'22"E
C37	9.000	14.137	12.728	N0°12'35"W
C38	30.000	58.201	49.494	N10°47'17"W
C39	30.000	8.481	8.453	N36°41'29"E
C40	30.000	12.377	12.290	N16°46'22"E
C41	30.000	12.257	12.171	N6°45'03"W
C42	30.000	12.500	12.410	N30°23'31"W
C43	30.000	12.586	12.494	N54°20'51"W
C44	10.000	3.892	3.872	N55°47'17"W
C45	10.000	2.888	2.878	N58°05'29"W
C46	10.000	0.804	0.804	N47°30'47"W
C47	9.000	14.137	12.728	N89°47'25"E
C48	9.000	14.137	12.728	N0°12'35"W
C49	20.000	25.936	24.157	N82°21'39"W
C50	40.000	51.872	48.313	N82°21'39"W
C51	40.000	12.844	12.789	N54°24'30"W
C52	40.000	13.020	12.963	N72°55'56"W
C53	40.000	13.059	13.001	N88°23'24"E
C54	40.000	12.949	12.893	N69°45'46"E
C55	10.000	14.994	13.629	N87°44'45"E
C56	30.000	44.983	40.886	N87°44'45"E
C57	30.000	5.956	5.946	N50°28'40"E
C58	30.000	15.670	15.493	N71°07'44"E
C59	30.000	5.006	5.000	N89°07'37"W
C60	30.000	18.351	18.066	N66°49'22"W
C61	50.000	18.547	18.441	N38°40'18"W
C62	9.000	13.907	12.564	N16°13'18"E
C63	70.000	25.104	24.970	N39°01'29"W
C64	70.000	10.368	10.359	N45°03'20"W
C65	70.000	14.736	14.709	N34°46'53"W
C66	9.000	14.257	12.812	N74°07'52"W



REGISTERED PLAN No. 20
 JAMES BEGG LOT
 PART 1, 11R-3244
 PART 2, 11R-3244

"HEAVY WOODED AREA - LANDS OWNED BY OTHERS"
 BLOCK "R", REGISTERED PLAN No. 39
 ROAD ALLOWANCE BETWEEN LOTS 14 & 15
 NORTH OF THE LAKE ROAD

"KETTLE CREEK GOLF COURSE LANDS"
 LOT 15, RANGE 1
 NORTH OF LAKE ROAD



DRAFT PLAN OF SUBDIVISION
 OF PART OF
CLERGY RESERVE LOT "D"
 NORTH OF THE LAKE ROAD
 AND PART OF
JAMES BEGG LOTS 14 & 15
 REGISTERED PLAN No. 20 (MIDD)
 AND PART OF
ROAD ALLOWANCE BETWEEN LOTS
14 & 15
 NORTH OF THE LAKE ROAD
 AND ALL OF
LOT "T", REGISTERED PLAN No. 39
 IN THE
TOWNSHIP OF SOUTHWOLD
 (GEOGRAPHIC TOWNSHIP OF SOUTHWOLD)
COUNTY OF ELGIN
 SCALE 1:1000 (Metric)
 TERRY P. DIETZ
 ONTARIO LAND SURVEYOR

ADDITIONAL INFORMATION REQUIRED UNDER SECTION 51(17) OF THE PLANNING ACT:

- a) AS SHOWN
- b) AS SHOWN
- c) AS SHOWN
- d) AS SHOWN
- e) AS SHOWN
- f) AS SHOWN
- g) AS SHOWN
- h) MUNICIPAL WATER AVAILABLE
- i) SILTY CLAY LOAM
- j) AS SHOWN
- k) STORM & SANITARY SEWERS, HYDRO, GAS
- l) AS SHOWN

LAND USE SCHEDULE

LOTS 1 TO 72, 82 TO 88 - SINGLE FAMILY RESIDENTIAL	4.41 ha. (44,144.28 sq.m.)
LOTS 73 TO 81 SEMI DETACHED DWELLINGS	2.02 ha. (20,294.36 sq.m.)
BLOCKS 89, 90 & 94 - OPEN SPACE	4.28 ha. (42,712.90 sq.m.)
BLOCKS 91, 92 & 92 - WALKWAYS	0.08 ha. (844.75 sq.m.)
ROADS	2.03 ha. (20,271.65 sq.m.)
TOTAL SITE AREA:	12.83 ha. (128,267.94 sq.m.)

OWNER'S CERTIFICATE
 I HEREBY AUTHORIZE CALLON DIETZ INC. TO SUBMIT THIS PLAN OF PROPOSED SUBDIVISION TO THE CORPORATION OF THE COUNTY OF ELGIN FOR APPROVAL.

Nov. 8, 2021
 LONDON, ONTARIO
 JAMES GLOVER
 I HAVE THE AUTHORITY TO BIND THE CORPORATION

SURVEYOR'S CERTIFICATE
 I HEREBY CERTIFY THAT THE BOUNDARIES OF THE LANDS TO BE SUBDIVIDED AND THEIR RELATIONSHIP TO ADJACENT LANDS ARE ACCURATELY AND CORRECTLY SHOWN ON THIS PLAN.

Nov 8/21
 LONDON, ONTARIO
 TERRY P. DIETZ
 ONTARIO LAND SURVEYOR

METRIC DISTANCES AND COORDINATES SHOWN ON THIS PLAN ARE IN METRES AND CAN BE CONVERTED TO FEET BY DIVIDING BY 0.3048

Callon Dietz INCORPORATED
 ONTARIO LAND SURVEYORS
 CARLETON PLACE LONDON NORTH BAY
 info@callondietz.com callondietz.com

SURVEY BY: DRAWN BY: H.D. FILE No: 19-22517B PLAN No: X-2801

ISO 9001