

Schedule "A"

To The Official Plan of

The Municipality of Central Elgin

LAND USE PLAN



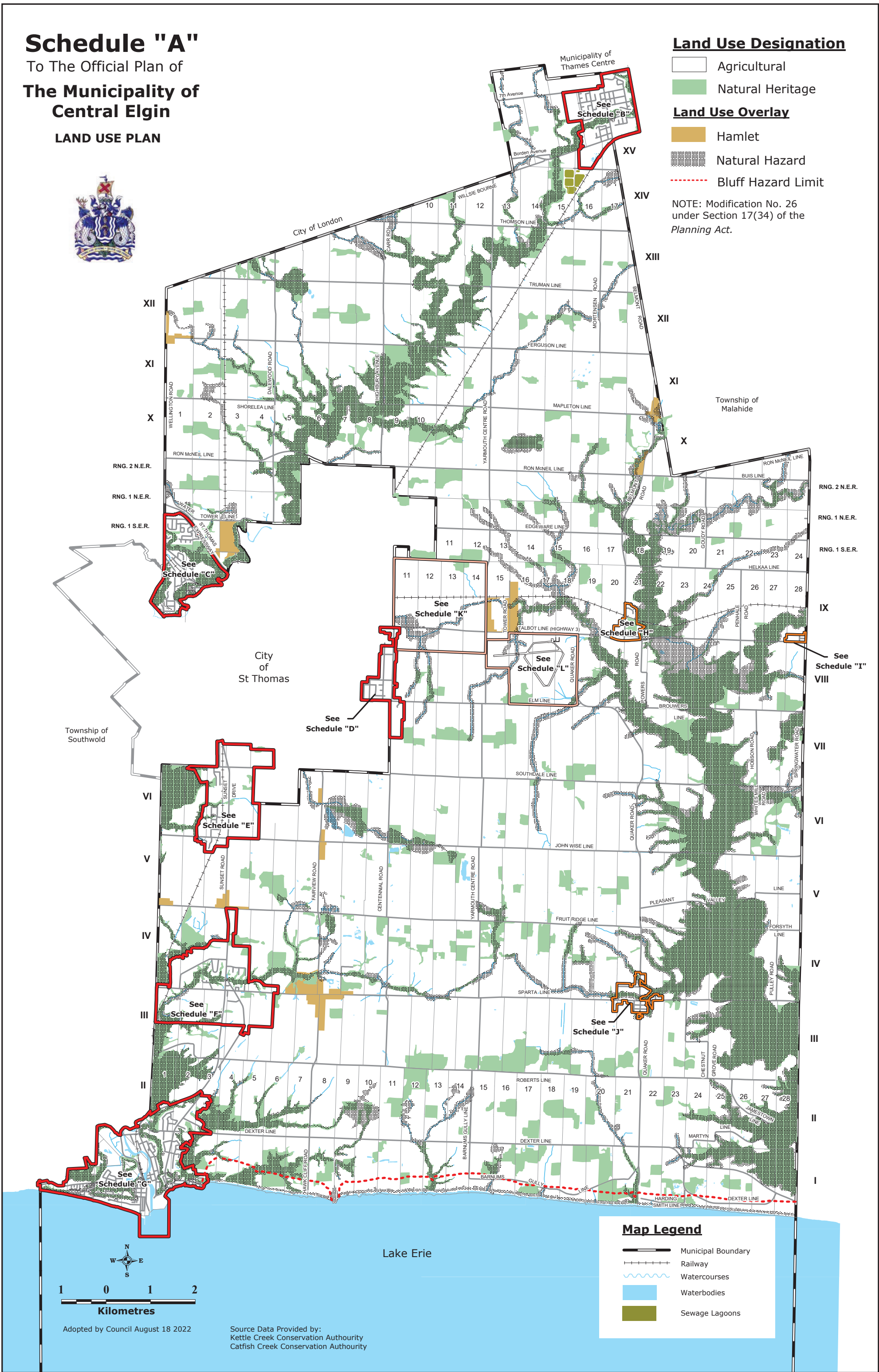
Land Use Designation

- Agricultural
- Natural Heritage

Land Use Overlay

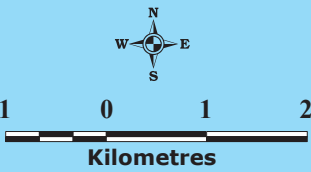
- Hamlet
- Natural Hazard
- Bluff Hazard Limit

NOTE: Modification No. 26 under Section 17(34) of the Planning Act.



Map Legend

- Municipal Boundary
- Railway
- Watercourses
- Waterbodies
- Sewage Lagoons



Adopted by Council August 18 2022

Source Data Provided by:
Kettle Creek Conservation Authority
Catfish Creek Conservation Authority