

Municipality of
Thames Centre

Schedule "B1"

To The Official Plan of
The Municipality of
Central Elgin

Community of Belmont

ROADS CLASSIFICATION and WIDENING

Roads Classification

Municipal

-  Collector
-  Local
-  Road Widening



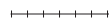



County

-  County Road

Provincial

-  Provincial Highway

Map Legend

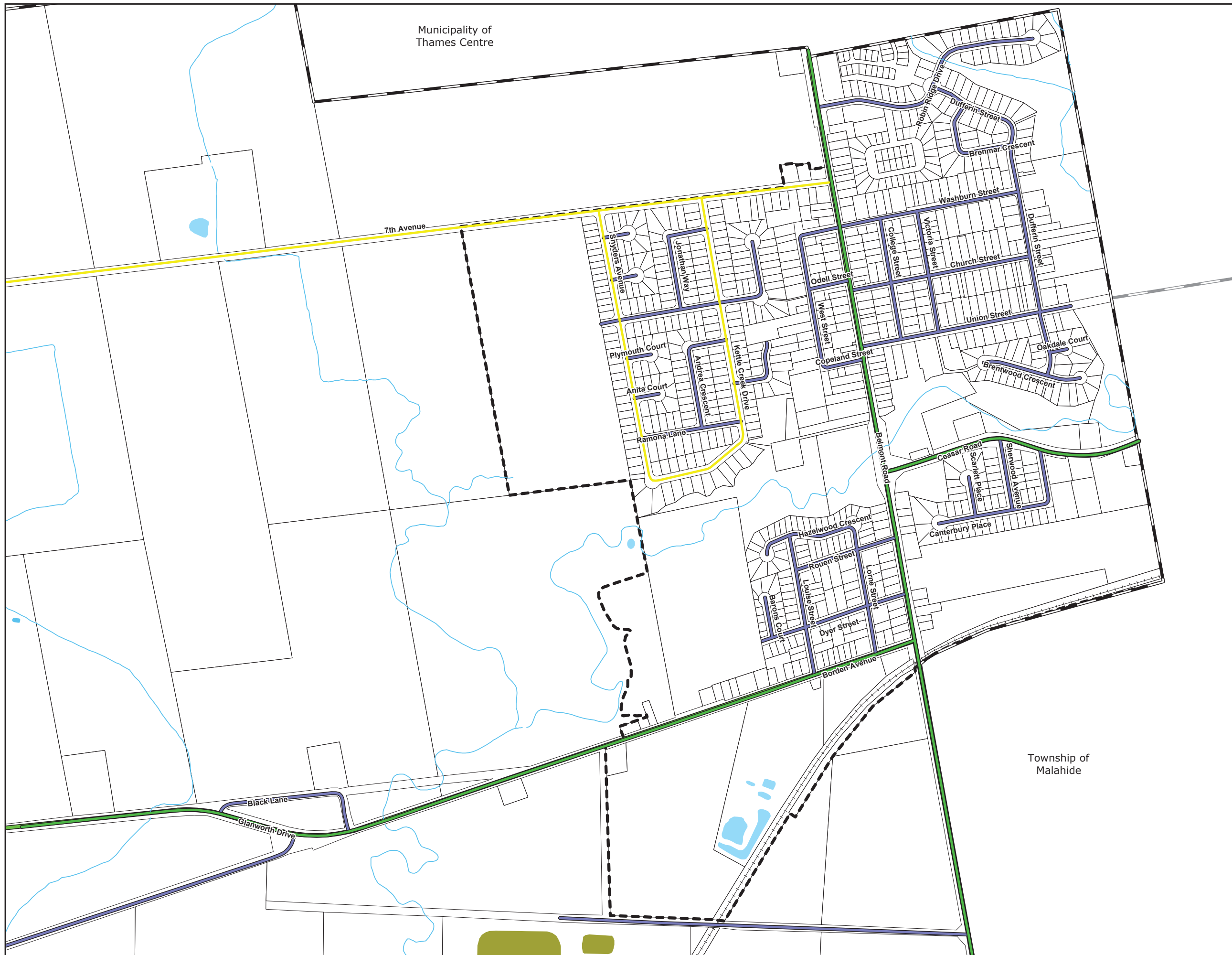
-  Urban Settlement Area
-  Municipal Boundary
-  Railway
-  Watercourses
-  Waterbodies
-  Sewage Lagoons



175 0 175 350

Metres

Adopted by Council August 18 2022



Township of
Malahide